



Hearing the Songs of the Wind

A One-day Meditation Retreat
with Lama Liz Monson

Saturday, March 29 | 9 am to 4 pm
at Concord UU and on Zoom

Our feeling, our song, our tears, our ability to embrace interbeing here with Mother Earth is about relationship. And the very highest point of relationship is love.

-- Pat McCabe

When we truly relax and let go, our familiar contracted ground (provisional ground of "identity") softens and melts and we have the sense of tapping into the source of life itself-- a luminous darkness full of pure potentiality unfolds in our awareness. We begin to sense an underground ballast like the keel of a sailboat, and we feel supported by the invisible, unshakeable, unchanging ground.

-- John Prendergast: The Deep Heart

- Are you looking to find ways to connect your practice to the wisdom of the natural world?
- Do you wish to hear the songs of the wild and learn from them?
- Are you seeking ways of being in service that arise from our interconnectedness with the earth?
- Are you interested in understanding what it means that at some point on our spiritual path "the whole world becomes the guru?"
- Are you curious to learn about subtler ways of connecting with the more than human realm?

If so, please join Lama Liz Monson for this one-day intensive.
Read more on page 3.

IN THIS ISSUE...

Why My Heart Is Here
PAGE 04

Kids & Families
PAGE 05

Sustaining our
Flourishing Community
PAGE 07

Project Wayfinder
PAGE 08

Ecological Land
Management
PAGE 09

NEW Parkinson's
Support Group
PAGE 10

Mud Season Dance
PAGE 11

Blue Moon Music House
PAGE 11

Programs for Seniors
PAGE 13



Sunday Worship is at 10 am

IN PERSON AND LIVESTREAM AT WWW.CONCORDUU.ORG/LIVE

3/2/2025 “Communities of Trust” Rev. Michael Leuchtenberger

Trust is core to social capital, the foundation of cooperation, networks, norms, and belonging. Social capital anchors relationships and helps communities function by fostering a sense of shared purpose, mutual support, and accountability. There is trust within groups, trust between groups, and trust in institutions and leaders. Trust is the glue that holds it all together. What does it take to trust (more)? How do we recognize and create communities of trust? As the choir will sing: When there’s trust in the room, we can dream.

3/9/2025 “Metaphysics of Harmony” Rev. Michael Leuchtenberger

Historically, the Western encounter with difference has been catastrophic: the extermination and displacement of aboriginal populations, the transatlantic slave trade, and colonialism. China took a different historical path. What can we in the West learn about our understanding of racial identity and racism from the Chinese approach to pluralism informed by Chinese philosophy? How does a ‘metaphysics of harmony’ lead to international relationships of mutual exchange rather than domination, as Shuchen Xiang argues in her book “Chinese Cosmopolitanism: The History and Philosophy of an Idea”? How do we learn to trust diversity?

3/16/2025 “Restoring Trust” Rev. Michael Leuchtenberger

“Trust is like the air we breathe - when it’s present, nobody really notices; when it’s absent, everybody notices.” (Warren Buffett) Trust involves vulnerability. The wounds of broken trust run deep. Recovery is often hard and not always possible. Yet without trust we cannot find love or joy in our relationships, nor can we have effective governance and democracy in our society. Restoring trust is a challenge, yet worthwhile. Our wellbeing depends on it.

3/23/2025 “Trusting Spirit” Rev. Michael Leuchtenberger

Today’s service kicks off “Spirit Week” - an invitation to make intentional space for reflection on what matters most, on what brings us alive, on the energy that animates us and connects us to the universe in all its mystery. Trusting spirit means trusting uncertainty. Trusting spirit means trusting grace. It invokes hope, faith, and faith in action.

3/30/2025 “Trusting Life” Rev. Bevan Tulk & Susi Nord

How can we trust life? Sometimes it is wild and wonderful, at other times it is tragic and heartbreaking, and often it is neither or both. Rev. Bevan Tulk and Susi Nord will share their thoughts on how we can trust life, no matter what it throws at us. This service concludes our “Spirit Week,” with time after worship for group reflection on the practices we’ve engaged the previous seven days.



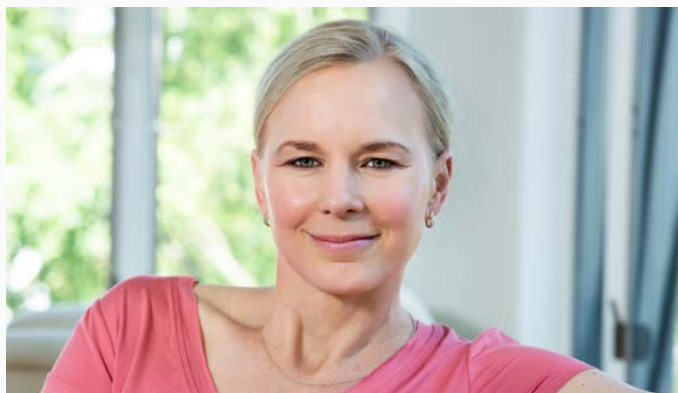
Hearing the Songs of the Wind

CONTINUED FROM PAGE 1

Please join Lama Liz Monson for this one-day intensive as we explore different skillful means for merging our spiritual practice with experiential exercises of listening to, learning from, and connecting with the natural world. As our planet spirals into the chaos of climate change, finding our connection to a deeper way of listening to and learning from the earth is imperative. In order for the human species and our planet to survive, we must exit the consumerist/extractive mindset that has led to so much harm. We must trust that the wisdom that exists beyond our relative, human assumptions about reality is deep and strong enough to redirect our energies toward the life-giving and transformational potential present in all beings and expressed continuously by the wind in the trees and the voices of the earth. By accessing these non-conceptual insights, we may finally find our place in family of all beings - one being among many others.

This retreat will include stories of how different Buddhist teachers have engaged with the wisdom of the natural world as a powerful support for their practice and conduct in the world; experiential exercises of connecting to and receiving teachings from the elements as these have been taught and practiced in the Tibetan Buddhist tradition; and contemplative practices to open our awareness to the ever-present songs and perspectives of the plants, trees, birds, stars, and skies. To register: uuconcordnh.breezechms.com/form/March292025HearingtheSongsoftheWindretreat.

The registration fee is \$25, with the opportunity to offer a donation (dana) to support Lama Liz's teaching. For any questions, contact Jeanne Ann Whittington at jawhittington3@gmail.com



Lama Elizabeth Monson, PhD, is the Spiritual Co-Director of Natural Dharma Fellowship and the Managing Teacher at Wonderwell Mountain Refuge in Springfield, NH.

Liz was authorized as a dharma teacher and lineage holder in the Kagyu Lineage of Tibetan Buddhism after over 30 years of studying, practicing, and teaching Tibetan Buddhism in the Kagyu and Nyingma lineages. In 2015, Liz completed a PhD at Harvard University in Religious Studies, and was a visiting lecturer at the Harvard Divinity School in 2015-16.

Liz is the author of two books:

More Than a Madman: The Divine Words of Drukpa Kunley (2014)

Tales of a Mad Yogi: The Life and Wild Wisdom of Drukpa Kunley (2021)

She is currently working on a book on Buddhist Tantra for publication with Shambhala Publications (forthcoming 2026). Her articles have appeared in *Tricycle*, *Lion's Roar*, *Buddhadharma*, *Journal of the International Association of Buddhist Studies*, and other periodicals.



Why My Heart is Here

Coordinating our Memorial Receptions

SUBMITTED BY RENEE WEST

We are beginning a series, called Why My Heart is Here, that will showcase how individual congregants' roles and activities at Concord UU help us find connection to, and meaning in, our lives at church. By spotlighting these individual stories, we hope to show how you might also find your heart's home here. I'm offering my story first, and I hope you enjoy getting a deeper insight into how the varying ways congregants offer service at church brings us meaning and joy, enmeshing us into the web of our church community and our community at large.

Since late 2021 I have been grateful to serve as the coordinator for our Memorial Receptions, events that are held after the Memorial Services for a congregant who has passed. Although I give my hand to other aspects of church life, this is one that truly touches my heart and connects me most deeply to our Beloved Community.

At these events, we create a space of peace where mourners feel cared for while grieving the loss of someone special in their lives. In creating the receptions, I have an opportunity to engage with the immensely kind spirits and good humor of those working alongside me, and I feel myself truly connected to the life of my church and to my own spirit as well. I love meeting with the families and friends of the person who has passed and hearing stories about them, so as to create a reception that is reflective of the person being celebrated. Offering them help and reassurance during a difficult time is a service that is most moving to me. It is also a way I can honor those who have helped to create the church from which I derive so much joy.

When I first took this role, I was a fairly new member and welcomed the opportunity to get to know others. For those of you who are new to our church and/or are struggling to make connections, I invite you to reach out to me at yolandor@icloud.com as I am sure that you will find, as I did, that these receptions are a lovely way to initiate and deepen relationships with others at Concord UU.





Young Explorers 1st, 2nd, and 3rd Sunday

This month the Young Explorers are starting the Tapestry of Faith curriculum ***Love Will Guide Us***, where our children will have the opportunity to “ask questions such as ‘where did we come from?’ What is our relationship to earth and other creatures?’...and ‘what happens when you die?’” We begin on March 2nd with our first session *Love is Like a Seed*. We will tailor this curriculum to meet the needs of all our kiddos 5-12! We are always looking for congregants willing to help out with our Young Explorers as they explore the world, themselves, and their faith. If you are interested in supporting these young learners in their exploration please contact our Young Explorer Guides:

Dory LeCount dory@concorduu.org

Sosa Machaba sosa@concorduu.org.

Pancakes, Play, and Planting Peace March 8th at 9 am

Have your kiddos been to Pancakes, Play, and Planting Peace yet? Bring your children or grandchildren and join us on the 2nd Saturday of each month as we come together for a pancake breakfast and a service project for our community. In January we made sock puppets and put on puppet shows to spark joy in one another. In February we created “love jars” to give the gift of love to those most special to us. Have an idea for a project, or know a cause that could use the help of 16+ little hands?? Let us know! Send your ideas to Dory or Sosa. We will see you and the kids on March 8th from 9 to 11am!





Dollars and Sense

SUBMITTED BY LEA SMITH, DIRECTOR OF MEMBERSHIP AND ADMINISTRATION

The financial reports for the second quarter of 2024-25 are ready. If you'd like to see them, email Lea Smith, lea@concorduu.org.

Our budget situation is strong. Overall, income is right where expected, and expenses are a little lower than expected.

We had exceptionally generous Operating and Holiday gifts, including over \$10,000 in unexpected gifts. Thank you for your generosity!

Pledges are coming in right on target in terms of timing, with 50% of pledges fulfilled at the end of Quarter 2. The pledged total of \$305,886 is about \$1,500 less than the budgeted amount of \$307,370. If you are a newer person to the church, might you [make a pledge now](#) to help us fill this gap?

Not enough people signed up for the Costa Rica trip fundraiser to make it happen, which we were counting on to raise \$7,000.

We have had a few unplanned high expenses:

- Liability insurance increased by 22%. (It also increased last year by 20%. Previous to that it had been fairly stable. We are hearing that other churches are seeing even higher increases, and some are being cancelled.)
- Health insurance increased by 11% in January. We budgeted for a 5% increase.
- We are contracting out our snow shoveling as we could not find a staff member to be on call 24/7. This will cause us to exceed the budget by \$1700.

But overall we are under budget on operating expenses, and the aforementioned overages shouldn't be a big problem.

Board of Trustees Highlights from February Meeting

SUBMITTED BY ANNE MEYERS, BOARD SECRETARY

- The Wayfinder Project small group meeting was held; valuable feedback from members, friends, and attendees was received by the board, furthering our discernment of our Ends.
- Attendance at services and interest in new membership remain strong and continue to grow.
- Board approved to cover the shortfall, up to \$15,000, for the stove replacement proposal, if the congregation can raise \$10,000 through a targeted appeal.



Sustaining Our Flourishing Community

2025-2026 Fiscal Year Stewardship Campaign

As we continue with another transformative year of spiritual growth and community building, we are preparing to launch our annual Stewardship Campaign. This campaign is a powerful opportunity for us to come together, reaffirm our commitment to our beloved community, and ensure the continued blossoming of our shared values.

Stewardship is more than a simple financial commitment; it is an expression of our collective dedication to creating a welcoming and nurturing space for all who seek spiritual exploration, social justice, community gatherings and meaningful connections. Your generous contributions directly support the programs, services, and outreach efforts that make our UU Church a vibrant and inclusive haven for seekers of all backgrounds.

Here are some key aspects of this year's campaign: Our Flourishing Community

- **Nurturing Our Spiritual Home:** Your financial support allows us to maintain our sacred space and multi-use facility, ensuring that it remains a welcoming, safe, secure, well maintained, and accessible environment for worship, reflection, and community gatherings.
- **Supporting Social Justice Initiatives:** Our commitment to justice and equality extends beyond our walls. Your contributions empower us to engage in meaningful social justice initiatives, creating positive changes in our local and global communities.
- **Sustaining Vibrant Programming:** From religious education for all ages to community-building events, your generosity enables us to provide diverse and enriching programs for youths and families of all ages, along with programs that cater to the spiritual and community needs of our members and friends.
- **Embracing Inclusivity:** We strive to be a congregation where everyone feels a sense of belonging. Your financial support allows us to invest in efforts that promote diversity, equity, and inclusion within our congregation.
- **Enabling our staff:** Your economic kindness allows us to support our staff – ministerial, office, and facilities – with a competitive compensation package.

We invite you to reflect on the impact our UU community has had on your life and the lives of those around you. Your commitment to stewardship, in whatever form it takes – Talent, Time, or Treasure - contributes to the vitality of our church and the fulfillment of our shared mission.

Every gift, regardless of size, makes a meaningful difference.

Thank you for your continued dedication to our Unitarian Universalist community.

May the spirit of love, inclusion, and generosity guide us as we navigate this journey together.

In gratitude and fellowship,
Jim Curley, Stewardship Chair

Building Our Future Together: Wayfinder Group Provides Powerful Insights



A group of twenty-three members and friends representing a cross-section of our congregation kindly gave their time on a Saturday morning to help the Board discern the future vision for our Church.

A presentation was provided summarizing the Board's proposed changes to our Mission and Ends statements which emerged from the answers we obtained to the "Powerful Question":

***"What could we build
with courage, wonder, and deep engagement
with self, with each other, with our larger community, and with the earth?"***

Participants then had the opportunity to ask questions and offer suggestions to improve the proposed Mission/Ends content and language. The observations were inspiring, thoughtful, and practical - providing a range of ideas for the Board to consider.

To gauge the group's confidence in the proposed direction, we asked: "Do the proposed Ends policies provide appropriate visionary guidance for our programs and ministries over the next 5-10 years?" A resounding 90% of participants expressed their agreement or strong agreement.

The Board is now in the process of reviewing the valuable feedback and discerning any changes to the Mission and Ends proposal that are warranted. We anticipate finalizing these crucial policy documents in March. Thank you to everyone who contributed to this important process!

Craig Whitson
On Behalf of the Board of Trustees





What's Going on with ELM?

What is ELM, you ask? ELM is part of the Green Sanctuary efforts, and it's an acronym for Ecological Land Management. Our focus last year and this year is on developing a plan for the church grounds to improve habitat for pollinators and other wildlife by focusing on identifying and removing invasive species and promoting native plants. We are working in conjunction with the Grounds, Memorial Garden, and Compost committees. Workdays are scheduled from March until the final Grounds cleanup on November 2, and we welcome your participation. ELM steering committee members will be available to provide identification of invasive species and education on how to remove them.

To be added to the ELM email list for workday reminders, updates, and links to interesting resources, please contact Laurel (603-738-2973; laurelwh@gmail.com).



Composting at Church

Great Volunteer Opportunity! The Compost Committee is looking for volunteers to transport the UU kitchen compostables to our on-site bins at the end of the parking lot, then return the bucket to the kitchen and clean it out with the high pressure nozzle. Training and education provided. This will benefit the native plants on the church grounds that help feed pollinators and are part of our interconnected web of life. Fun opportunity for families. Done weekly throughout the year, preferably on Sundays when you're already at church. Depending on the response to this request we'll figure out a rotating schedule.

To sign up or for more information contact:
Laurel 603-738-2973
or Dana 603-731-5606





Plan Ahead for the Yard & Plant Sale

SUBMITTED BY BETSY KENNEDY

This may be hard to believe, given the recent weather, but Spring will come. I promise! Sooner than you think! This year I have the privilege of organizing the Spring Yard and Plant Sale (in May). As my first request to y'all, I suggest using that box from a recent Amazon purchase in which to put those odd items you come across on a shelf or in a drawer that you find yourself saying "*I haven't used/worn that in years!*". Start filling that box(es) at your home for a win-win situation: you clear your shelves/drawers and your UU Church of Concord gets a donation! Stay tuned!

NEW: Parkinson's Support Group

If you have Parkinson's or are a care partner for someone who does and are looking for a support community, please join us on March 4, for our introductory meeting. We hope to provide a non-threatening setting where you can connect with people who may be experiencing similar successes and challenges to those you are facing as well as to provide opportunities to learn new things.

When: Tuesday, March 4, 10 am to 11:30 am

Where: Concord Unitarian Universalist Church, 274 Pleasant St. Concord, NH

For more information contact Coordinators:

Peg Herbert p herb46@gmail.com

(603) 491-7878 or

Laurel Horne laurelwh@gmail.com

(603) 738-2973

2024 Report on the St. Pauly Textiles Shed

Here are some stats on the "clothing shed" located in our parking lot.

- 22,987 pounds of clothing were donated in 2024.
- This was enough to clothe an estimated 4,235 people all over the world.
- Based on this volume of clothing, the church received \$919.

Mud Season Dance Party

SUBMITTED BY SUSAN CASEY, JENN STAR, AND RENEE WEST

It's been a COLD few months, and soon those mountains of snow will melt into muddy puddles. Which means...it's time for our Mud Season Dance Party! Please join us on Friday, March 7th from 7 to 9pm for fun and frolicking with your friends.

This year's party is a little different, a little more relaxed. Instead of a sit-down dinner, we ask that you bring some snacks or baked goods to revive the revelers. We're also mixing it up with the music; our "DJ on the fly" Michael Leuchtenberger will collect your song requests that evening and create a playlist, you guessed it, on the fly!

As in previous years, we plan on having lots of glowing/sparkling decorations, and encourage guests to wear either neon, white, and/or sparkly clothing to reflect the lights.

We are looking for folks who can help with setup before the even (tall folks especially needed) and cleanup after; if you are able to assist, please send Renee an email at yolandor@icloud.com.

Can't wait to see you there!



Blue Moon Music House Presents Marching into March with Songs of Protest March 11 | 7 pm to 9 pm

Share your protest songs and anything inspiring.

Sign up to perform at

<https://forms.gle/v68wuUXEfLMVYAdp8>





Silent Auction Opens March 23 Live Auction on April 6

Mark your calendars for the biggest fundraiser of the church year.

Sunday, April 6 at 11:30, immediately after the church service, come into Fellowship Hall and be ready to bid on the **Live Auction** items. Michael is the auctioneer and he'll have lots of energy and fun planned for us all! All will have a free chance to win door prizes and eat delicious foods. Whether you plan to bid or prefer to watch, come join the entertainment of Michael-The-Auctioneer for yet another excuse to be together for a good cause.

Prior to that, there will be lots of items in the Silent Auction where you can bid online. Our **Silent Auction will open on Sunday, March 23 and close two weeks later on Sunday, April 6 at 6 pm**. You'll find the link on our homepage at www.concorduu.org when it's ready.

Let us know about your donations now! Fill out the donation form by March 9 to help us plan the auction lineup:

uuconcordnh.breezechms.com/form/auction2025



BOARD-HOSTED AUCTION DINNER
NOVEMBER 2024

Label Your Checks, Please!

Thank you so much for your generous donations, whether it's for a pledge, targeted appeal, designated fund, or something else. Please help our wonderful Assistant Treasurers, Ann West and Lorraine Ellis, by labeling all checks in the memo line with the purpose. If it's a pledge, please add the FISCAL year (right now it's 2024-25.) Pledge checks with nothing noted will be applied to the current fiscal year, and it's hard to change it later when you get your statement and tell us it's wrong. If you are sending money through a third party service (like a charitable gift fund) that doesn't allow you to put your intentions in the memo line, please let Ann know by email at annjwest@gmail.com



Interested in a Senior Singles Social Club?

Come to the Planning Meeting to share your ideas and help make it happen ! Our goal is to have fun together and enjoy shared interests and good company. Open to all 55 and older - we won't ask for birth certificates!

When: Sunday, March 9, 3:30-4:30

Where: The Parlor

Draft descriptor of Senior Singles Social Clube

The goal of the Senior Singles Social Club is to support single seniors in having fun together and enjoying shared interests and good company. All seniors aged 55 and older are welcome. All group activities will be generated by the members. Members may post an activity, listing date, time, location on a shared SSSC site (or calendar??) Other members may join the activity by signing up on the site (calendar). Member meetings will be held as needed for the purpose of discussing how the program is serving members' needs and any changes to improve it.

Aging Together: Elder Circles of Healing & Wholeness

Second Fridays of the Month: March 14, April 11, May 10 | 10:30 am to 1 pm

Let's gather in Circle to share stories from our years of life experience, dwell in questions essential to life, harvest wisdom from our ancestors, & explore ways to live more fully our UU values. Afterwards, we'll share a light lunch.

Since the day we were born we have been aging! From Source to Mystery, we dwell in essential questions. Where did we come from? What are we? Where are we going? Why do you/I get up in the morning? Does my life matter? How then shall we live these coming years?

You may ask *Who are elders?* We are generally folks in the second half of life. There are different generations of elders at Concord UU, yearning for authentic community time. We are seeking communal programs & practices that offer: (1) grieving & healing circles to navigate the losses in our lives, (2) empowering connections & personal relevancy to make a difference and tackle social injustices in our culture, and (3) inner contemplation to discover anew our spiritual nature and become our true selves.

You are invited to come HOME to your true self in a monthly Unitarian Universalist community of healing & wholeness.

Please RSVP:

Rev. Pat Hoertdoerfer to receive Aging Together agenda & resources phoertdoerfer@metrocast.net

Rev. Michael Leuchtenberger with your questions & transportation needs michael@concorduu.org.

Upcoming Special Events

Mar 2 | Sun | 2025-2026 Stewardship Campaign Kickoff

Mar 4 | Tues | Parkinson's Support Group @ 10 am

Mar 5 | Wed | UU Art Talks from Home @ 10 am on Zoom

Mar 7 | Fri | Mud Season Dance Party @ 7 pm

Mar 8 | Sat | Octagon Dinner

Mar 12 | Wed | UU Art Talks from Home - Lunch and Tour at the Currier Museum of Art

Mar 14 | Fri | Earth Centered Spirituality Group - Full Moon service @ 7 pm

Mar 23 to Apr 6 | Silent Auction

Mar 23 to 30 | Spirit Week - Contemplative Practice Group

Mar 26 | Wed | Exploring Membership Class #3

Mar 29 | Sat | *Hearing the Songs of the Wind* Meditation Retreat led by Lama Liz Monson

On our events lists on pages 14 and 15, **events that are in colored, bold print may be of special interest to kids and families.** At the request of several parents with young children, we're trying to make it easier to find the events that interest them. For other events, we may be able to offer childcare on request. Please request childcare at least two weeks in advance by emailing Dory LeCount, dory@concorduu.org.

Parish Notes Deadline

April issue: March 23

Submit to parishnotes@concorduu.org by 2 pm on the day of the deadline.

Officers

Treasurer | Vacant

Custodian of Investments | Jack Wakelin
Assistant Treasurers | Lorraine Ellis, Ann West

Moderator | Barbara Keshen
Clerk | Ann Hoey

Board of Trustees

Chair | Craig Whitson
Vice-Chair | Jim Curley
Secretary | Anne Meyers
Arthoen Wolf
Susi Nord
Larry Davis

Staff

Senior Minister & Choir Director

Rev. Michael Leuchtenberger
603-715-7557 (cell)
michael@concorduu.org

Dir. of Membership & Administration

Lea Smith
603-224-0291 ext 3#
lea@concorduu.org

Church Administrator

Becky Bosse
603-224-0291 ext 1#
becky@concorduu.org

Accompanist

Heather Maconaghy
heather@concorduu.org

Young Explorers Guides

Sosa Machaba | sosa@concorduu.org
Dory LeCount | dory@concorduu.org

Childcare Providers

Patrick Yehle & Bayshay Bruss

Custodian | Agnes Sesay

Sexton | Miguel Andrada

2024-25 Recurring Events

Special Worship Services

Taize at Concord UU - every 1st Sunday @ 7 pm, October through April

UU Worship at Havenwood - every 4th Thursday @ 1 pm, September through May

Earth Centered Spirituality Rituals - on or near solstices, equinoxes, and cross-quarter days

Faith Exploration Events

Sermon Dialogue - 1st Sundays at 11:45 am

Second Hour Adult Programs - 2nd and 3rd Sundays at 11:30 am

Young Explorers Program - 1st, 2nd, 3rd Sundays at 10 am

Elder Circles of Healing & Wholeness- 2nd Fridays @ 10:30 am, October through May

Covenant Groups - monthly small group ministry (contact Becky Bosse to join)

Contemplative Events

Daily Silent Morning Meditation - Daily @ 7 am Zoom Only

Thursday Morning Meditation Group - Thursdays @ 7 am Zoom Only non-church link

Mindful Yoga - 1st, 3rd, and 5th Mondays @ 6:30 pm

Mindfulness Practice Group - 2nd and 4th Mondays @ 6 pm

Walking the Labyrinth - 1st Sundays starting @ 6 pm before and after Taize Service, October through April

Social, Family, & Fellowship Events

Youth Group - 2nd and 3rd Fridays @ 7 pm

Community Lunch - 2nd and 3rd Sundays @ 12:30 pm

Tuesday's Welcome Table - Tuesdays @ 6 pm

Games and Chocolate - 1st Fridays @ 6:30 pm

Art & Appetizers - 2nd Fridays @ 6 pm

Pancakes, Play & Planting Peace - 2nd Saturdays @ 9 am

Family Covenant Group - 3rd Fridays @ 6 pm (contact organizers before attending)

Neurospicy Humans Covenant Group - 3rd Saturdays @ 6 pm (contact organizers before attending) **(this month only, it is the 4th Saturday, March 22)**

Knitting Group - 2nd Saturdays @ 10 am

Musical Events

Choir Rehearsal - Thursdays, 7 pm to 8:30 pm

Choir Warm Up - Sundays when choir is singing @ 9 am

Drum Circle - 3rd Sundays @ 7 pm

Outreach Events

Friendly Kitchen prep and serve day - 1st Wednesdays @ 3 pm

Healing & Helping Events

Solace Circle - 1st Fridays @ 6 pm

* PFLAG Support Group - 3rd Sundays @ 3 pm

* Renaissance New England Transgender Group - 2nd Saturdays @ 4 pm in September, November, January, March & May (contact organizers before attending)

* public support groups that meet at the church but are not church programs.

UNITARIAN UNIVERSALIST CHURCH OF CONCORD
274 PLEASANT STREET
CONCORD, NH 03301-2551

OFFICE@CONCORDUU.ORG
WWW.CONCORDUU.ORG
603-224-0291

RETURN SERVICE REQUESTED

RETURN SERVICE REQUESTED

